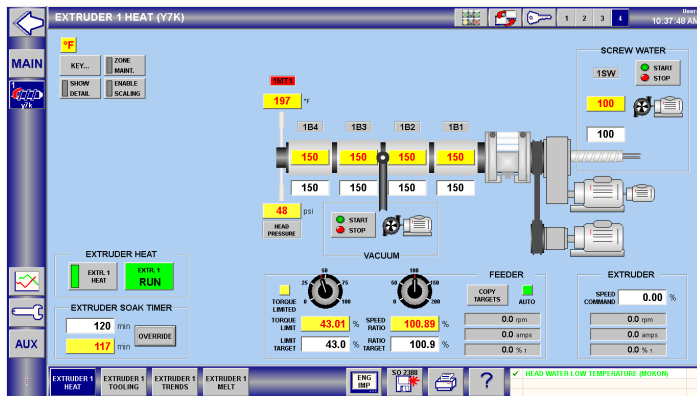




# American Kuhne XC200 Navigator® Extruder Controls

## American Kuhne XC200 Navigator® control system

The system offers the full power & functionality of our Navigator® control system for one or more extruders in simultaneous operation. The HMI is via a panel or optional swing-arm mounted screen map with integrated hard-wired Estop, Start, Stop, & Reset pushbuttons. Capable of a broader range of monitoring, control, & diagnostics than the XC100, the system offers intuitive navigation, easy to understand graphical displays of controls, status & alarms along with integrated machine documentation.



### Monitor and Control Functionality:

- Closed loop barrel PID heat/cool control
- Clamp and die zone control
- Heater burn-out detection/alarm
- High temperature alarm
- Melt pressure monitor with dual alarms
- High pressure shutdown
- Melt temperature monitor
- Soak timer/cold start interlock
- Hour meter
- 7 day timer
- Extruder screw speed control (start/stop, speed display, amp display)
- Alarm history, 365 days
- Security access manager
- Recipe manager
- Trending of any parameters that are monitored & controlled
- Remote diagnostics
- Integrated, real-time I/O diagnostic



*ULTRA Extruder with 15.6" swiveling touchscreen*

### Hardware and Software:

- 15.6" Beckhoff wide-screen touch display
- Panel mount
- Beckhoff Industrial PC & I/O
- Fully integrated safety I/O
- Power back-up
- Ultra high speed real-time Ethernet field bus system (EtherCAT)
- InduSoft HMI software

### Options:

- Heater current monitoring
- Melt pressure control
- Melt pump control
- Multiple extruders (up to 2)
- 21" Beckhoff touchscreen
- TwinCAT Scope View charting & analysis tool
- Predictive maintenance monitoring
- OPC UA Interface
- Production monitoring/shift report
- Bar code scanner
- Electronic signatures
- FDA 21 CFR Part 11

